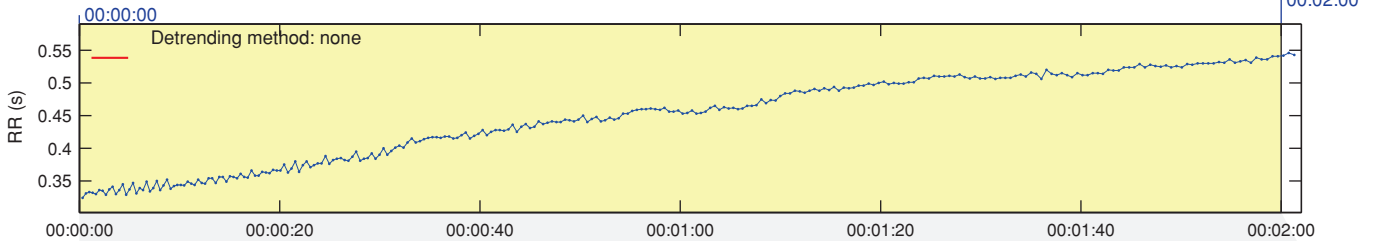
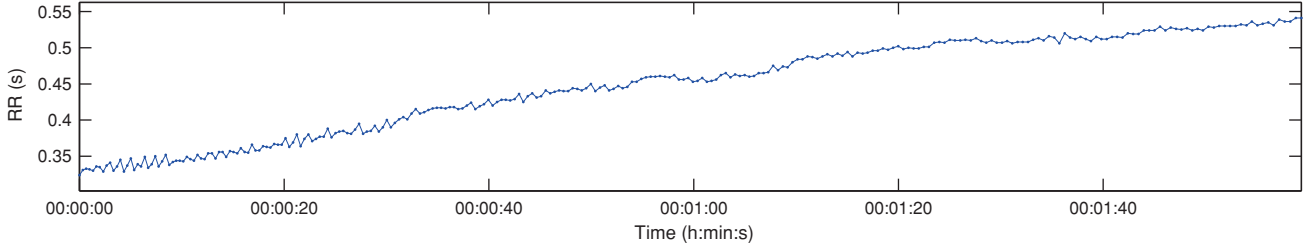


RR Interval Time Series

Results for a single sample



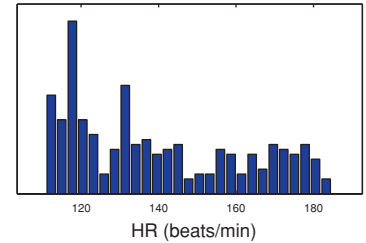
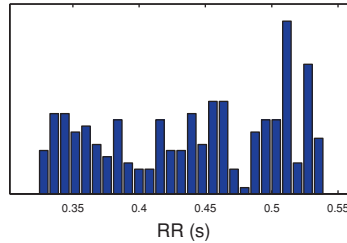
Selected RR Series



Time-Domain Results

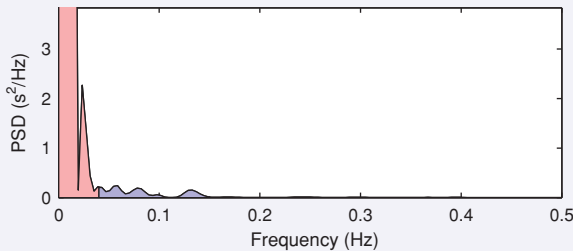
Variable	Units	Value
Mean RR*	(ms)	440.0
STD RR (SDNN)	(ms)	66.0
Mean HR*	(1/min)	139.65
STD HR	(1/min)	22.06
RMSSD	(ms)	5.3
NN50	(count)	0
pNN50	(%)	0.0
RR triangular index		13.600
TINN	(ms)	215.0

Distributions*



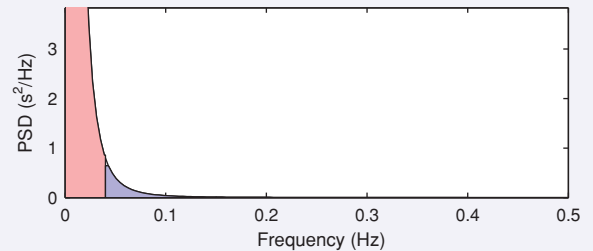
Frequency-Domain Results

FFT spectrum¹ (Welch's periodogram: 256 s window with 50% overlap)



Frequency Band	Peak (Hz)	Power (ms ²)	Power (%)	Power (n.u.)
VLF (0-0.04 Hz)	0.0078	1082	98.9	
LF (0.04-0.15 Hz)	0.0586	11	1.0	91.0
HF (0.15-0.4 Hz)	0.2383	1	0.1	9.0
Total		1094		
LF/HF		10.083		

AR Spectrum² (AR model order = 16, not factorized)

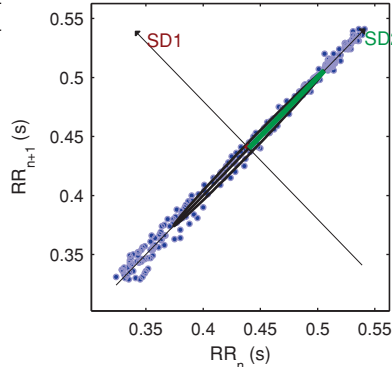


Frequency Band	Peak (Hz)	Power (ms ²)	Power (%)	Power (n.u.)
VLF (0-0.04 Hz)	0.0000	128955	100.0	
LF (0.04-0.15 Hz)	0.0430	14	0.0	93.9
HF (0.15-0.4 Hz)	0.1523	1	0.0	6.1
Total		128970		
LF/HF		15.418		

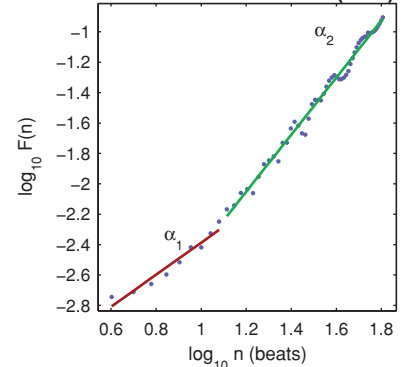
Nonlinear Results*

Variable	Units	Value
Poincare plot		
SD1	(ms)	3.8
SD2	(ms)	93.0
Recurrence plot		
Mean line length (Lmean)	(beats)	107.84
Max line length (Lmax)	(beats)	262
Recurrence rate (REC)	(%)	49.31
Determinism (DET)	(%)	99.91
Shannon Entropy (ShanEn)		4.498
Other		
Approximate entropy (ApEn)		0.141
Sample entropy (SampEn)		0.123
Detrended fluctuations (DFA): α_1		1.055
Detrended fluctuations (DFA): α_2		1.876
Correlation dimension (D2)		0.788

Poincare Plot



Detrended fluctuations (DFA)



*Results are calculated from the non-detrended selected RR series.